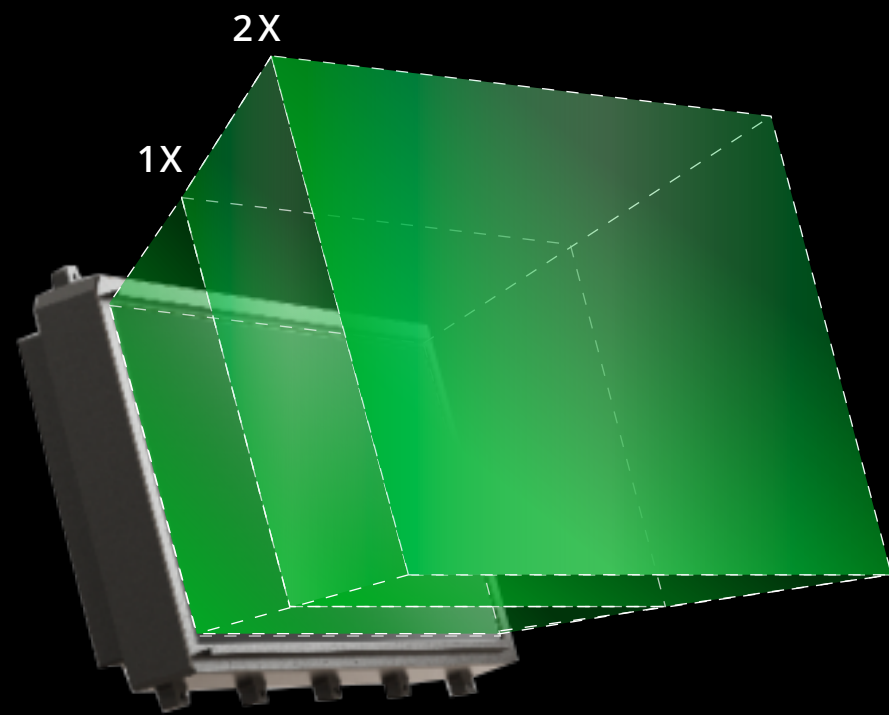


# Korry



2x  
BRIGHTER

600  
FOOT-LAMBERTS

Twice as bright. Half the power.



INTRODUCING

## Korry Large Area Display

A night and day  
improvement over  
existing LADs

# Korry

Get in touch >



[www.korryKDM2150.com](http://www.korryKDM2150.com)

For more information contact us at:

+1 425 297 9700  
ddcu\_cs@korry.com  
www.korry.com

Korry Electronics  
11910 Beverly Park Rd.  
Everett, WA 98204

APPROVED FOR PUBLIC RELEASE  
DISTRIBUTION UNLIMITED  
The information and data given are  
typical for the equipment described.  
However, any individual item is  
subject to change without any notice.

MODEL **NEW**  
**KDM2150**  
20" by 8" Display Head

# A clear improvement

Developed for military and commercial use, the Korry Large Area Display offers an improved human factor experience under a variety of conditions. Innovative technology advancements allow for a thin, light unit that is twice as bright as conventional displays and startlingly crisp, while drawing significantly less power.



Twice as bright.  
Half the power.

## Developed in partnership with the USAF

The Korry Large Area Display was developed in partnership with the Air Force Research Lab to improve optical performance while reducing overall power and weight. Korry succeeded on both objectives by adapting proven commercial technologies to high-performance aerospace applications.

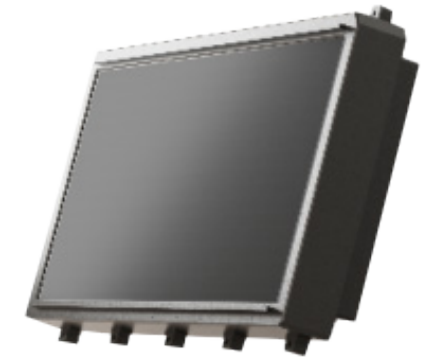
Our first-in-the-industry, full-array backlight technology efficiently manages brightness and color across all environments, at any aspect ratio, while drawing roughly half the power of conventional displays.



## Dramatic reduction in power, weight and depth

Korry's groundbreaking display technology offers the unique ability to finely control the application of light, illuminating only where it's needed, slashing energy consumption and sharply improving contrast.

The full array backlight also minimizes screen geometry, which coupled with advanced electronics and circuitry, helps to reduce overall weight and depth.



## Improved reliability, day and night

The USAF objective was to improve readability in a variety of conditions and the Korry Large Area Display delivers with 600 foot-lamberts—twice as bright as a conventional display—and enhanced contrast ratios for both dark and bright environments.

Its full-array backlight ensures consistent color performance day and night, while a fully-redundant design eliminates single points of failure, offering unmatched reliability and clarity.

## From the experts in HMI

Korry has been a trusted name in human-machine interface (HMI) solutions since 1937. Our team of technologists and innovators have developed a variety of proprietary technologies used in the new Korry Large Area Display.

In addition to employing industry-leading experts in NVIS, optics and illuminations, Korry houses a complete range of test engineering expertise and test lab facilities that specialize in addressing compliance to commercial and military aerospace environmental and EMI/EMC standards.

Get in touch >

[www.korryKDM2150.com](http://www.korryKDM2150.com)

**Korry**